



TYPE EXAMINATION CERTIFICATE

According to Lifts Regulations 2016, Schedule 11, Section A

Certificate No.:	UK-UCM 006/2
Approved Body:	TUV SUD B A B T UNLIMITED Octagon House Concorde Way, Segensworth North Fareham, Hampshire, PO15 5RL, UK Identification No. 0168
Certificate Holder:	Blain Hydraulics GmbH Pfaffenstraße 1 74078 Heilbronn - Germany
Manufacturer of the Test Sample: (Manufacturer of Serial Production - see Enclosure)	Blain Hydraulics GmbH Pfaffenstraße 1 74078 Heilbronn - Germany
Product:	Hydraulic valve for a brake element as part of a protection against unintended downward car movement
Type:	L10 1½"
Regulation:	Lifts Regulations 2016
Reference Standards:	EN 81-20:2020 EN 81-50:2020
Test report:	No. UK-UCM-004-1_007-2 dated 2022-10-26
Outcome:	The product conforms to the essential health and safety requirements of the mentioned Regulation if the requirements of the annex to this type examination certificate are kept.
Date of Issue:	2022-11-07

Achim Janocha

TUV SUD B A B T UNLIMITED



1 Scope of application

Hydraulic valve for a brake element as part of a protection against unintended downward car movement, type L10 1½"

Maximum braking distance after triggering up to	800 mm
Maximum permissible distance: level position - triggering up to	250 mm
Permissible nominal speed up to	1.0 m/s
Permissible release speed up to	1.3 m/s
Permissible nominal flow	≤ 400 l/min
Nominal pressure range	10 - 59 bar
Viscosity range	20 - 450 cSt

2 Conditions

- 2.1 For identification and information about the principal design and operation and for demarcation of the examined and approved sample the approval drawing, no. L10-1.5" F KS a (Blatt 1-2) of 2022-07-20 with certification stamp of 2022-10-06 has to be enclosed to the type examination certificate and its annex.
- 2.2 The above-mentioned safety component represents only one part of the protective equipment against movements of the car in downward direction. Only in combination with a detection and triggering component (also two different components are possible), which must be subjected to an own type-examination according to the test procedure specified in EN 81-50:2020, section 5.8, the created system can fulfil the requirements for a protection means in accordance with EN 81-20:2020, section 5.6.7.
- 2.3 The installer must prepare test instructions in order to meet the overall concept of the elevator system, enclose these test instructions in the elevator documents and if necessary, provide important tools or measuring devices which allow easy tests (e.g., when landing doors are closed).
- 2.4 Provided that the voltage drop on the coil has occurred within the distance of 250 mm as indicated in the scope of application it can be assumed that the requirements for braking distance and acceleration according to EN 81-20:2020, point 5.6.7.5 and 5.6.7.6 are met.
- 2.5 The Blain UCM-valve is an electrically operated check valve which can only be used in connection with an elevator valve as an additional safety valve for the prevention of unintended downward travel while a landing door is open according to EN 81-20:2020, section 5.6.7. The detection of emergency cases, the function of the brake in an upwards direction and the triggering of both brakes is the task of the control unit.
- 2.6 In order for it to function properly, the magnet of the Blain UCM-valve must be de-energized in accordance with the requirements of EN 81-20:2020, Section 5.6.6.5 at the latest when the car has moved a maximum of 250 mm from the flush position with the door open. Dead times of the electronic system must be considered.
- 2.7 The installer must be provided with written confirmation of the compliance of the component with the type tested part as well as of the guaranteed braking distances and accelerations.
- 2.8 The type examination certificate may only be used in combination with the corresponding annex and enclosure (List of authorized manufacturer of the serial production). The enclosure will be updated immediately after any change by the certification holder.

**Annex to the Type Examination Certificate
No. UK-UCM 006/2 of 2022-11-07**



3 Remarks

3.1 This type examination certificate was issued according to the following standards:

- EN 81-20:2020
- EN 81-50:2020

A revision of this type-examination certificate is inevitable in case of changes or additions of the above-mentioned standards or of changes of state of the art.

3.2 In case that there is a risk of unintended car movement in the upward direction, appropriate measures must be taken by the installer.

**Enclosure to the Type Examination Certificate
No. UK-UCM 006/2 of 2022-11-07**



Authorised Manufacturer of Serial Production – Production Sites (valid from: 2022-10-12):

Company Blain Hydraulics GmbH
Address Pfaffenstraße 1
74078 Heilbronn - Germany

- END OF DOCUMENT -

Nr.	Benennung	Zeichnungsnummer	Material	Artikelnummer	Stk.
1	Gehäuse L10 1 1/2" F mit KS	L 112 FS	ACJ/MPPb	500620	1
2	Nochbaß M 1x1,5	Nochbaß M 1x1,5		102078	1
3	Kolbenring	Drosselschraube Kolbenring		101996	1
4	KV1 0,5 Senkbohrn (Adj.5)	Senkbohrn KV1 (Ø) -Y40		103397	1
5	Magnetrohr AB	Magnetrohr AB		102042	1
6	Oversichtswinkel Flansch Schraube 18 lang	Schraube 18 lang	blauverzinkt	102100	1
7	Verschlußschraube DIN934 M10x1,6 blauverzinkt	DIN934 M10x1,6 blauverzinkt		100286	3
8	Feder	F 85	EN 10270-1 SH	100152	1
9	Magnetstift "ab"	EV 139	1.4305 (X0CrNiS18-9)	102521	1
10	Magnet-Kern	EV 135	1.0718 (11SMnPS30)	102462	1
11	Magnetstift	EV 133	3.1645 (EN AW-2007)	102470	1
12	Stützschraube 2,2	EV 134 - 2,2	X12CrNiS188 Nr. 1.4305	102478	1
13	Stab Magnetstift "ab"	EV 133-1	Drahtgewebe	102471	1
14	O-Ring 26x2 NBR 70	O-Ring 26x2 NBR	NBR	102226	1
15	Verschlußschraube G1/2"	EV 296	1.0718 (11SMnPS30)	102391	1
16	L 10 Kolben 1 1/2"	L10-103		103446	1
17	Typenschild mit CE 0036	EV 148 CE 0036	Aluminium mit Heber 3M 468	105718	1
18	Feder	F 81	schwarzverzinkt	100169	1
19	Zylinderbohrung DIN912 M10x2,8 schwarzverzinkt	DIN912 M10x2,8 schwarzverzinkt		100074	4
20	O-Ring 42x3 NBR 70	O-Ring 42x3 NBR	NBR	100241	1
21	Deckel L 10 1 1/2"	L 122	ACJ/MPPb	103412	1
22	Stiftkegel	DIN5401-4	Kugelmaterail, G24 Klasse 3	100189	1
23	Kugelschalenringsschraube	L 145	DIN 912 - Met 14	103428	1
24	Gewindestiftkopfen 1/2"	Cera Art.-Nr.-40186	LDPE	103038	1
25	Gewindestiftkopfen 1/2"	Cera Art.-Nr.-40460	LDPE	103034	2
26	Verschlußschraube G1/2"	EV 296	1.0718 (11SMnPS30)	102392	1
27	Feder	F 80	Federstahlstift EN 10270-1 SH	100168	1
28	Stiftkegel	DIN5401-6	Kugelmaterail, G24 Klasse 3	100190	1
29	Feder	F 69	EN 10270-1 SH	100157	1
30	Nochbaß	EV 148 N	Aluminium mit Heber 3M 468	102543	1
31	L 10 Filter für 1,5"-2,5" L20	L 10 Filter für 1,5"-2,5" L20		500995	1

Alternative Bauteile zu Position 31 (Filterbaugruppe):

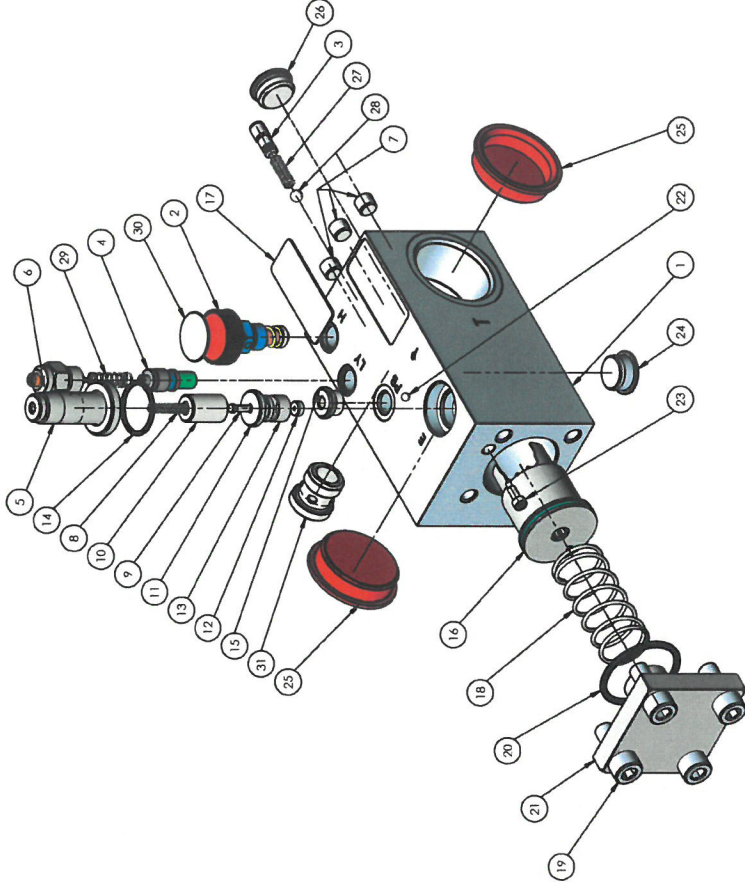
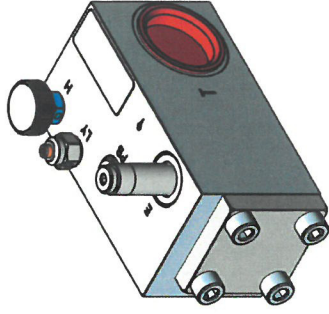
Nr.	Benennung	Zeichnungsnummer	Material	Artikelnummer	Stk.
31 a	Gehäuse Einströmfilter für 1,5"-2,5" L20	L 166	118MNP30-C	500854	1
31 b	Gehäuse Einströmfilter für 1,5"-2,5" L20 - Nrn	L 166	118MNP30-C	500987	1
31 c	Gewebe Einströmfilter für 1,5"-2,5" L20	L 167	1.4301 Drahtgewebe	500951	1
31 d	Gewebe Einströmfilter für 1,5"-2,5" L20 - Nrn	L 168	1.4301 Drahtgewebe	500988	1

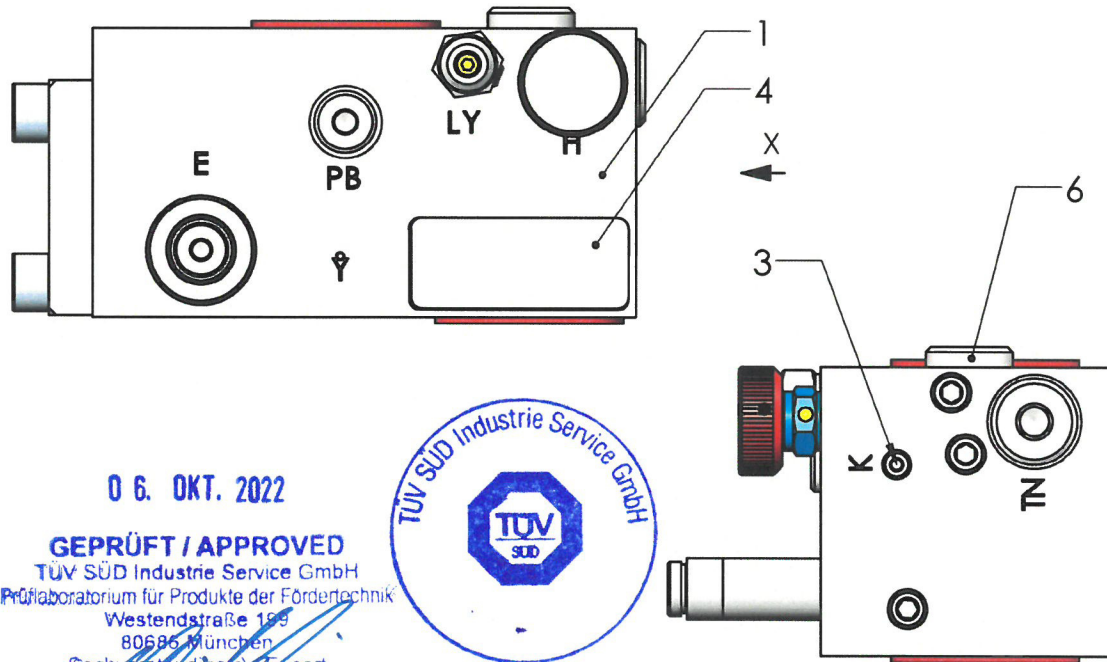
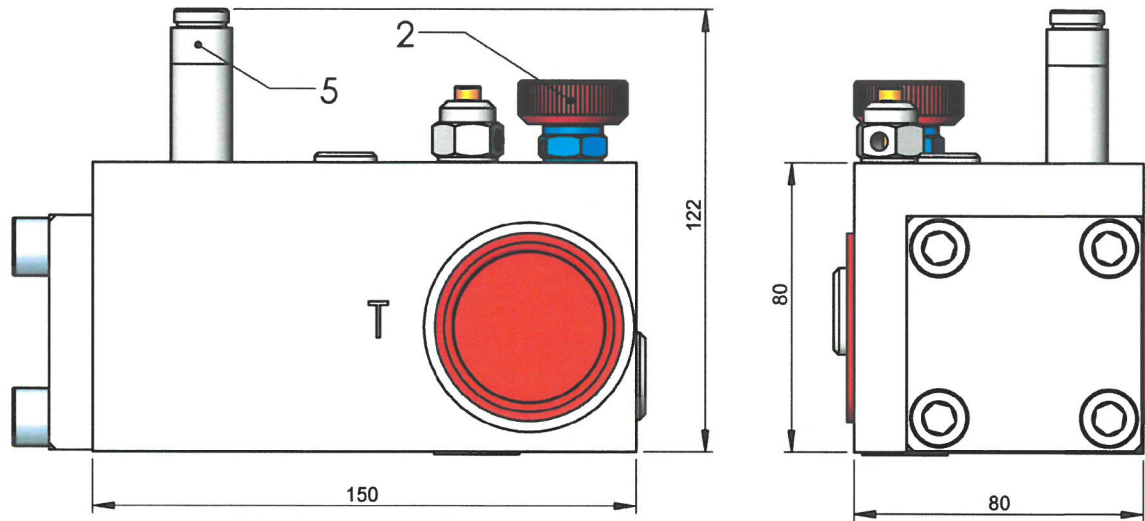
0 6. OKT. 2022

GEPRÜFT / APPROVED
TUV SÜD Industrie Service GmbH
Prüflaboratorium für Produkte der Feinmechanik
Westendstraße 109
80686 München
Sachverständigen / Experten

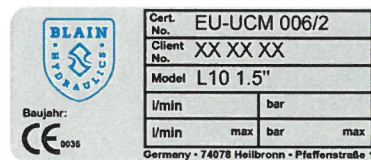


Muster Typenschild (Art.Nr. 6)





Position	Benennung
1	Gehäuse L10F 1½" mit KS
2	Notablaß M14x1,5
3	Kolbensicherung
4	Typenschild mit CE (EV-L10)
5	Magnetrohr AB
6	Filter



Muster Typenschild (Art.Nr.4)

Mittwoch, 14. September 2022 13:32:24	F.Pausder	gratfrei ; Freimaßtoleranz: DIN ISO 2768m				Ungefähres Gewicht in Gramm :
	Werkstoff:	Datum	Name	Maßstab	Benennung:	Art.-Nr.: 103435
	Rohrmaße:	gez 20.07.2022	CQ	1:2	Drucksperrventil 1.5" mit KS	Zeichnungs-Nr.: L10 1.5" F KS b

C:\Blain\L10\TUV