

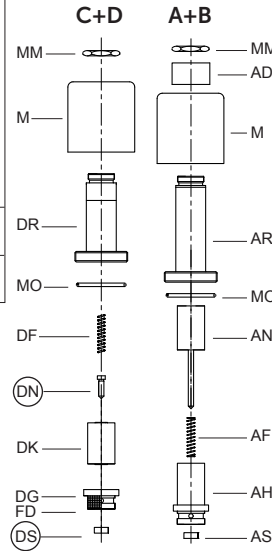


Pos.	No.	Item
1	FS	Lock Screw - Flange
	FO	O-Ring - Flange
	1F	Flange - By Pass
	EO	O-Ring - Adjustment
	1E	Adjustment - By Pass
	UO	O-Ring - By Pass Valve
	U	By Pass Valve
2	UD	Noise Suppressor
	UF	Spring - By Pass
2	2	Adjustment - Up Acceleration
3	3	Adjustment - Up Deceleration
4	EO	O-Ring - Adjustment
	4E	Adjustment - Up Levelling
	4F	Flange - Check Valve
	FO	O-Ring - Flange
	VF	Spring - Check Valve
	W	Up-Levelling Valve
	WO	O-Ring - Up Levelling Valve
5	VO	Seal - Check Valve
	V	Check Valve
	W6	Screw - Check Valve
	3	Adjustment - Up Stop
	3	Adjustment - Down Acceleration
7	7F	Flange - Down Valve
	FO	O-Ring - Flange
	7O	O-Ring - Adjustment
	7E	Adjustment - Down Valve
	UO	O-Ring - Down Valve
	XO	Seal - Down Valve
8	X	Down Valve
	XD	Noise Suppressor
9	F	Main Filter
	9E	Adjustment - Down Deceleration
H	9E	Adjustment - Down Levelling
	EO	O-Ring - Adjustment
S	9F	Spring - Down Valve
	Y	Down Levelling Valve
A+B	H	Manual Lowering - Self Closing
	HO	Seal - Manual Lowering
	SE	Adjustment - Screw
	SM	Hexagonal
	MS	Grub Screw
C+D	SO	O-Ring - Nipple
	SZ	Nipple
	SF	Spring
	SK	Piston
	MM	Nut - Solenoid
A+B	AD	Collar - Solenoid
	M	Coil - Solenoid (indicate voltage)
	AR	Tube - Solenoid 'Up'
	MO	O-Ring - Solenoid
	AN	Needle - 'Up'
C+D	AF	Spring - Solenoid 'Up'
	AH	Seat Housing - 'Up'
	AS	Seat - Solenoid 'Up'
	MM	Nut - Solenoid
	M	Coil - Solenoid (indicate voltage)
C+D	DR	Tube - Solenoid 'Down'
	MO	O-Ring - Solenoid
	DF	Spring - Solenoid 'Down'
	DN	Needle - 'Down'
	DK	Core - Solenoid
C+D	DG	Seat Housing with Screen-'Down'
	FD	Filter Solenoid
	DS	Seat - Solenoid 'Down'
	MM	Nut - Solenoid
	M	Coil - Solenoid (indicate voltage)

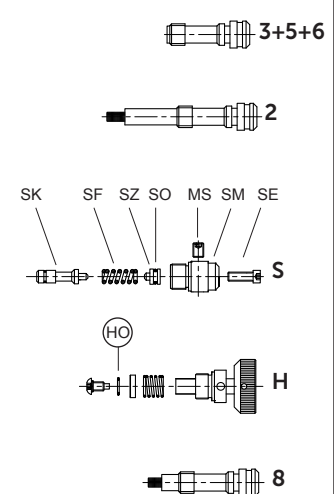
No.	3/4"	1 1/2"	2 1/2"
FO	26x2P	47x2.5P	58x3P *
EO	9x2P	9x2P	9x2P
UO	26x2V	39.34x2.62V	58x3V
WO	5.28x1.78V	5.28x1.78V	5.28x1.78V
VO	23x2.5V	42x3V	60x3V **
7O	5.28x1.78P	9x2P	9x2P
XO	13x2V	30x3V	47x3V
HO	5.28x1.78V	5.28x1.78V	5.28x1.78V
SO	5.28x1.78P	5.28x1.78P	5.28x1.78P
MO	26x2P	26x2P	26x2P

* FO by 4F 2 1/2" is 67x2.5P
 ** 90 Shore
 O-ring: V = FKM - Viton
 P = NBR - Perbunan

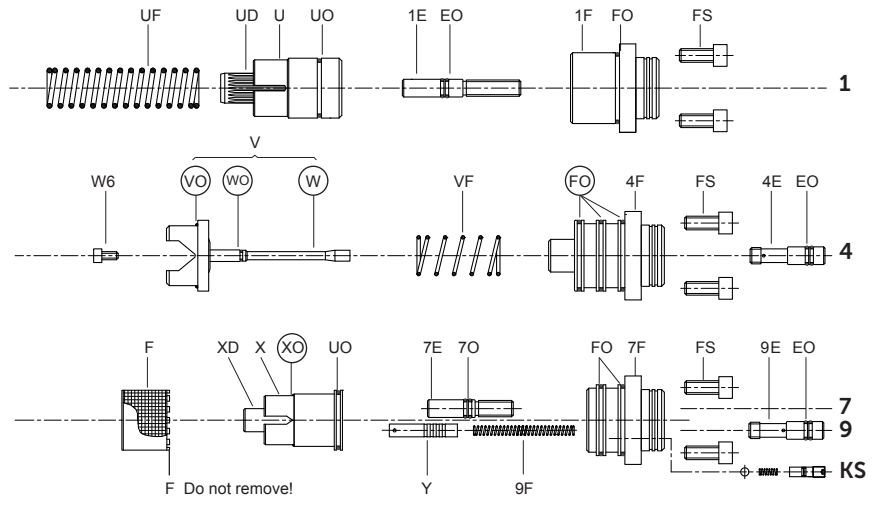
Solenoid Valves



Adjustments

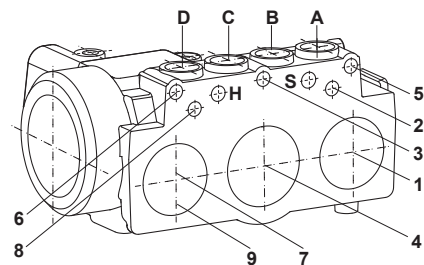
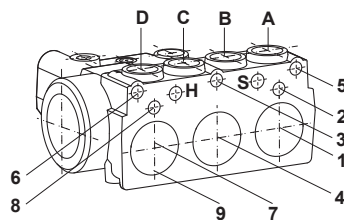
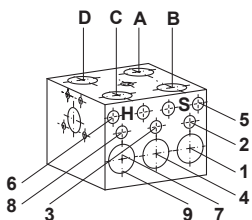


Flow Valves



In case of down leakage, replace and test in the following order: (DS) & (DN), (XO), (VO), (WO), (FO) + (HO).

Taper threads: Do not exceed 8 turns of piping into the valve connections.

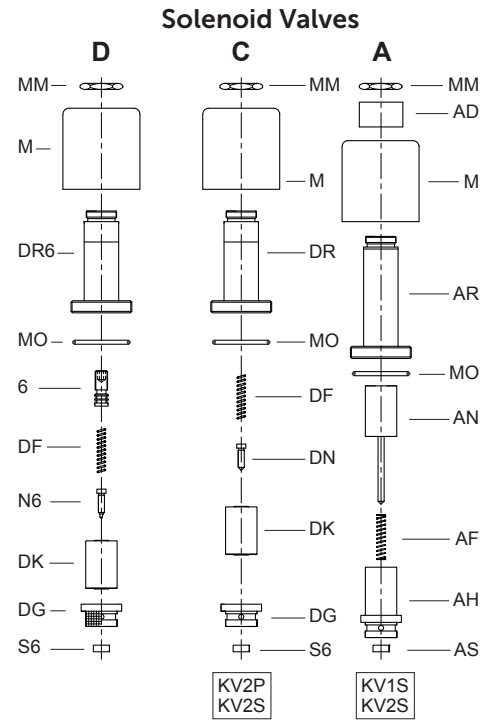


To order EV: Size (inch), valve type, state pump flow, empty car pressure (or flow guide size) and solenoid voltage.
Example order: 2"EV100, 380l/min, 18bar (empty), 110 AC or 2"EV100/4/110AC

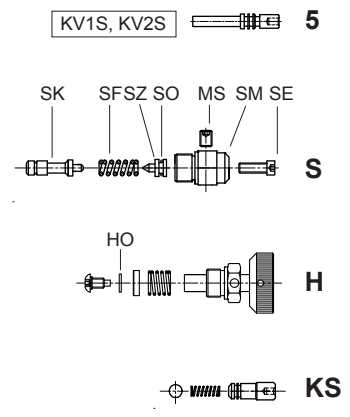




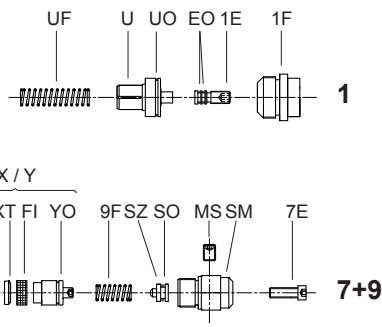
Pos.	No.	Item
1	1F	Flange - Bypass
	1E	Adjustment - Bypass
	EO	0-Ring - Adjustment (3,5x1,5 - P)
	U	Flow Guide - Bypass
	UO	0-Ring - Bypass (17x1 - V)
	UF	Spring - Bypass
5	5	Adjustment - Up Stop
6	6	Adjustment - Down Acceleration
7+9	7E	Adjustment - Down Valve
	9F	Spring - Down Valve
	YO	0-Ring - Flow Guide (10x1 - V)
	XO	Seal - Flow Guide (5.28x1.78 - V)
	XT	0-Ring Disc
	FI	Filter - Down Valve
	X	Down Flow Guide (Brass)
	Y	Down Levelling Flow Guide (Steel) - KV2
	Y	Down Flow Guide (Steel) - KV1
S	SE	Adjustment Screw - Relief Valve
	SM	Hexagonal - Relief Valve
	MS	Locking Screw
	SO	0-Ring - Nipple
	SZ	Nipple - Relief Valve
	SF	Spring - Relief Valve
SK	Piston - Relief Valve	
H	H	Manual Lowering - Self Closing
	HO	Seal - Man. Lowering (0-Ring 5.28x1.78 - V)
HA	HA	Adjustable Manual Lowering
KS	KS	Slack Rope Valve
A	MM	Nut Solenoid
	AD	Collar Solenoid
	M	Coil Solenoid (indicate voltage)
	AR	Tube Solenoid 'Up'
	MO	0-Ring Solenoid
	AN	Needle Solenoid 'Up'
	AF	Spring Solenoid 'Up'
	AH	Seat Housing 'Up'
	AS	Seat Solenoid 'Up'
	C+D	M
DR		Tube - Solenoid 'Down', w/o adj. 6
DR6		Tube Solenoid 'Down', with adj. 6
MO		0-Ring Solenoid
DF		Spring Solenoid 'Down'
C		DN Needle Solenoid 'Down'
D		N6 Needle Solenoid 'Down' (Nipple)
C		HN Needle Solenoid 'Down'
C		DK Core Solenoid 'Down'
C		DG Seat Housing 'Down'(Solen.D with screen)
C	S6 Seat Solenoid 'Down'	
C	CO 0-Ring Seat Housing	
Z	ZA	Cylinder Thread Connection
	V	Check Valve
	VO	0-Ring Check Valve (5,28x1,78 - V)
	F	Main Filter
L	L	Gauge Shut Off Cock



Adjustments



Flow Valves



In case of down leakage, replace and test in the following order: S6, N6, HO, V complete, XO, (2x XO with KV2).

